

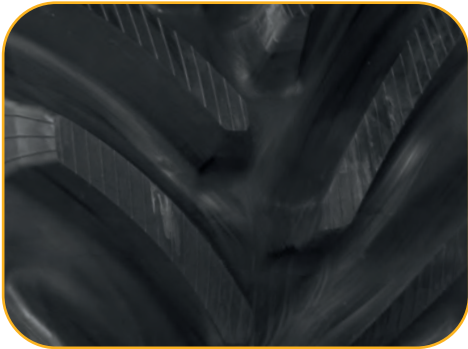
# VULCAN AGRI



**AGRICULTURAL RUBBER TRACKS**  
FOR COMBINES AND TRACTORS

Trusted Parts Dealer Since 1873

# VULCAN AGRI



## ONE-STEP VULCAN

**Vulcanisation in one step** of track core, guide lugs and tread patterns reinforce solidity and **prevent tread pull off**. All track parts are strongly vulcanised and bonded together. **Low wearability rubber compound** offers extended lifetime.



## STRONG CABLES

The track tensile strength is ensured by a full **layer of 5.4mm, seamless tension cables**. In addition, the track's core is reinforced with as much as **four steel cable layers** placed at special angles to maximise the core stiffness, making our tracks **the best choice for durability and flexibility**.



## ENGINEERED QUALITY

New **self-cleaning tread bars** improve traction whilst offering no vibrations. The tracks are designed to last and come with up to **2 years warranty** on Friction and Positive Drive Machines.

## TRUSTED DEALER

Leach Lewis supply the industry only with **high quality products at extremely competitive prices**. We have a long tradition of **servicing and maintaining high levels of customer satisfaction**.



# VULCAN AGRI

## PRODUCT RANGE

TRACK SIZE	MODEL	WIDTH
	<b>CHALLENGER - AGCO</b>	
25"x6"x53	Challenger Rowcrop 35/45/55	25" - 635mm
30"x6"x56	Challenger Tillage 65/75/85/95	30" - 762mm
25"x6"x58	Challenger MT735/745/755/765/775	25" - 635mm
30"x6"x59	Challenger MT735/745/755/765/775	30" - 762mm
30"x6"x66	Challenger MT835/845/855/865/875 Fendt MT1149/MT1154/MT1159/MT1165	30" - 762mm
36"x6"x66	Challenger MT835/845/855/865/875	36" - 914mm
	<b>CASE - NEW HOLLAND</b>	
30"x6"x39	CNH 9300/9330/9350/9380	30" - 762mm
36"x6"x39	CNH 9300/9330/9350/9380/Dewulf RCA3060	36" - 914mm
30"x6"x42	CNH STX Quad 420/470/500/580/620 Axial Flow 7250/8250/9250	30" - 762mm
	<b>JOHN DEERE</b>	
18"x6.75"x48	John Deere 8RT	18" - 457mm
30"x6"x60	John Deere 8RT	30" - 762mm
25"x6"x54	John Deere 8000T/8*10T/8*20T/8*30T	25" - 635mm
30"x6"x54	John Deere 8000T/8*10T/8*20T/8*30T	30" - 762mm
30"x6"x65	John Deere 9RT	30" - 762mm
30"x6"x45	John Deere 9RX	30" - 762mm
36"x6"x45	John Deere 9RX	36" - 914mm
25"x6"x39	John Deere S680/S690/S770i/S780i/S790i	25" - 635mm
	<b>CLAAS TERRATRAC</b>	
25"x7"x38	CLAAS Lexion 600TT/740/750/760/770/780/960/ Grimme Maxtron/Ploeger Harvester	25" - 635mm





# VULCAN AGRI

The Leach Lewis name has been involved in the construction industry since 1967, and can even be traced back as far as 1873 when Lewis & Lewis was founded. We strive to offer quality, value for money products and are here to support you with all your requirements whilst establishing long term partnerships with our customers. When choosing your rubber tracks, make sure you contact our professional team for advice and support.



**Best Prices. Fast Deliveries.**  
**Trusted Supplier. High Quality**

#### LEACH LEWIS RUBBER TRACKS LTD

UK: Units 4-5 Hikers Way, Crendon Industrial Park, Long Crendon HP18 9RW  
T: +44 1844 463115 | E: sales@llrt.co.uk

FRANCE: 58 Avenue De Wagram | 75017 PARIS  
T: +33 4 92 34 49 76 | E: rb@llrt.co.uk

[www.llrt.co.uk](http://www.llrt.co.uk)

